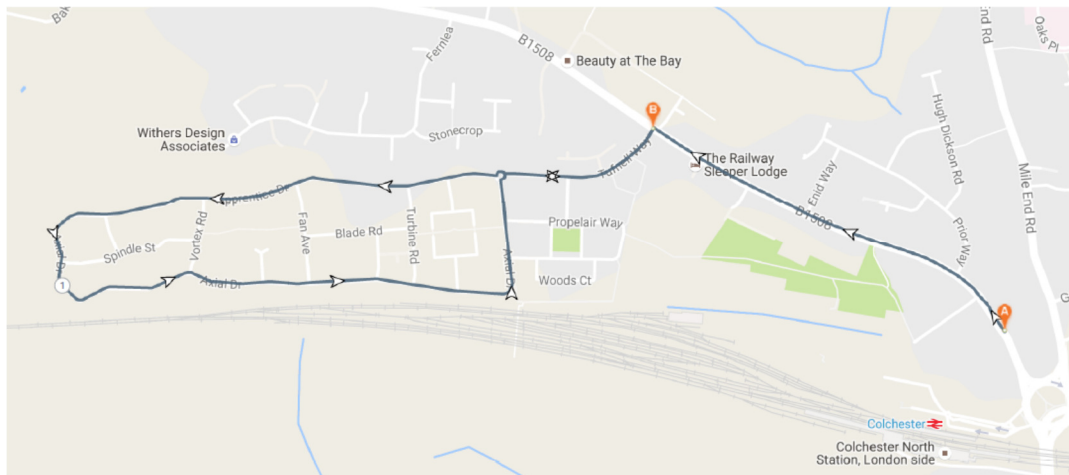


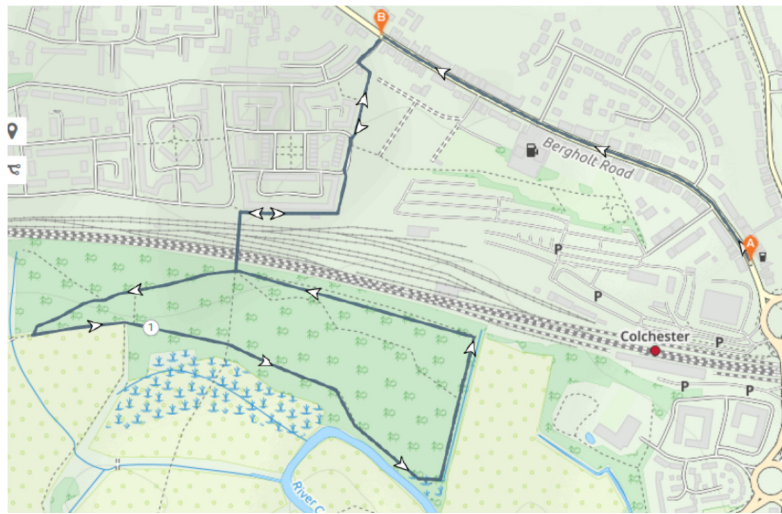
Bricklayers Walk (First section buggy friendly)

- Start point: Bricklayers Arms
- Head up Bergholt Road away from the station.
- Cross at a safe crossing point and continue until you turn left into Tufnell Way (gated housing estate).
- Cross the mini roundabout and continue along apprentice Drive.
- Continue ahead until Apprentice Drive becomes Axial Drive.
- Continue round along Axial Drive until you reach the mini roundabout.
- Turn right back on to Tufnell Way.



Bricklayers Walk (Alternative first section – not suitable for buggies includes steps)

- Start point: Bricklayers Arms
- Head up Bergholt Road away from the station.
- Cross at a safe crossing point and continue until you turn left into Tufnell Way (gated housing estate).
- Pass the fenced power unit and take the footpath to the left.
- Continue along the footpath adjacent to the railway and turn left down through the underpass (steps to be negotiated).
- Enter Charter wood turn right, following the perimeter path around the woods and back to the underpass.
- Return along the footpath to Tufnell way and back onto Bergholt Road.



Bricklayers Walk (Second section)

- Cross Bergholt road and continue straight ahead up the private road.
- Turn left and follow the path along the field edge behind the houses.
- As the path bends, take the footpath to the right.
- Follow this path straight through until you emerge onto Braiswick Lane.
- Turn left and follow the lane, past 'Property Book UK' where it becomes a footpath.
- Continue along the footpath and turn left onto the path leading through Colchester Golf Course.
- Exit the footpath in to Braiswick Place and continue back on to Bergholt Road.
- Turn left and continue back down Bergholt Road until you return to the Bricklayers Arms.

